





**\*\*GUIDE PRICE £275,000 - £300,000\***

**\*\*NO ONWARD CHAIN\*\***

NEXA Properties are delighted to welcome this beautiful three bedroom terraced house situated in a sought after location on Maurice Road, Southsea.

On the ground floor is an extremely spacious lounge/dining room with laminate flooring, this leads to a recently fitted kitchen and downstairs bathroom with shower over bath, WC and basin.

Off the kitchen is access to a garden with the benefit of rear access.

Upstairs offers three good size double bedrooms, all with carpet and neutral décor.

Situated close to bransbury park, shops, supermarkets, butchers and just a walk away from Southsea Seafront.

Offered with the huge benefit of no onward chain.

Please contact NEXA to arrange your viewing.

- GUIDE PRICE - £275,000 - £300,000
- NO ONWARD CHAIN
- THREE DOUBLE BEDROOMS
- SPACIOUS LOUNGE
- MODERN KITCHEN & BATHROOM
- REAR ACCESS
- SOUGHT AFTER LOCATION
- NEUTRAL DECOR THROUGHOUT
- CLOSE TO BRANSBURY PARK
- WALKING DISTANCE TO SEAFRONT



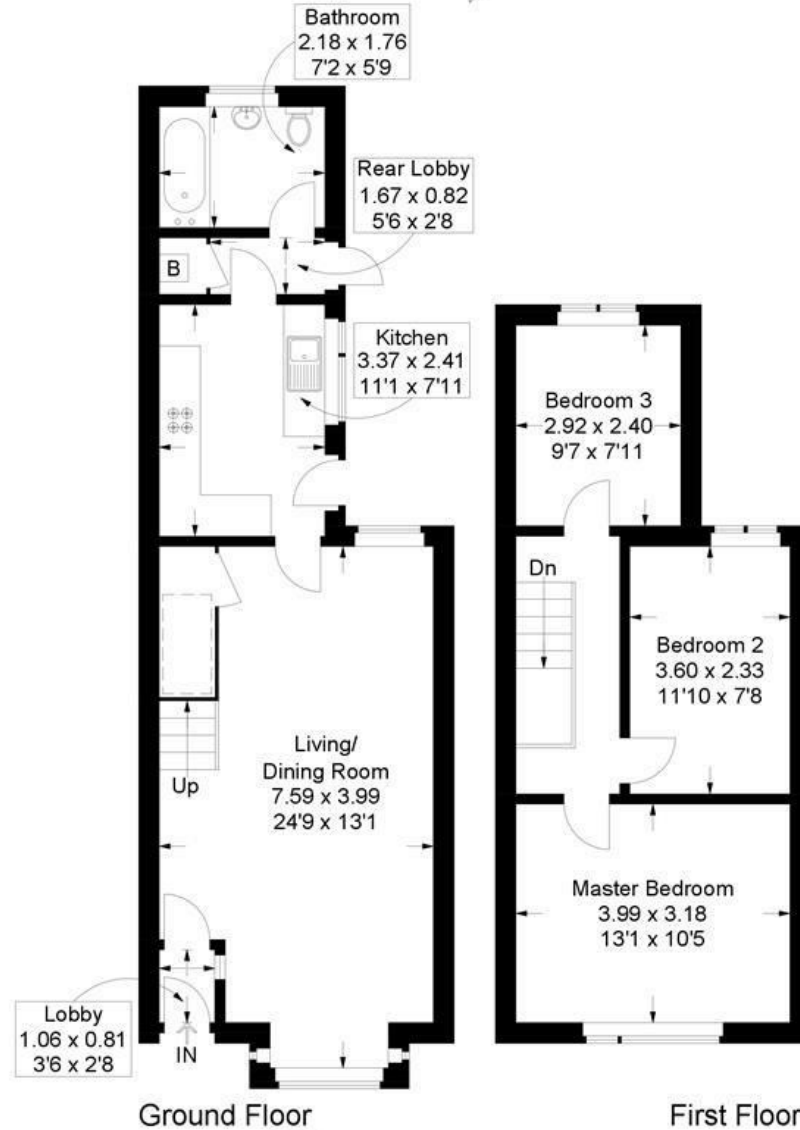
# Maurice Road, Milton

Approximate Gross Internal Area = 78.9 sq m / 849 sq ft

(Excluding Reduced Headroom / Eaves)

Reduced Headroom = 1 sq m / 11 sq ft

Total = 79.9 sq m / 860 sq ft



This plan is for layout guidance only. Not drawn to scale unless stated. Windows and door openings are approximate. Whilst every care is taken in the preparation of this plan, please check all dimensions, shapes and compass bearings before making any decisions reliant upon them.